

() 0% () 00

siRNA transfection

PRSS21 (-PRSS21#
-PRSS21#
000
PRSS21

Quantitative real-time PCR (qPCR)

PRSS21

Cell proliferation assay

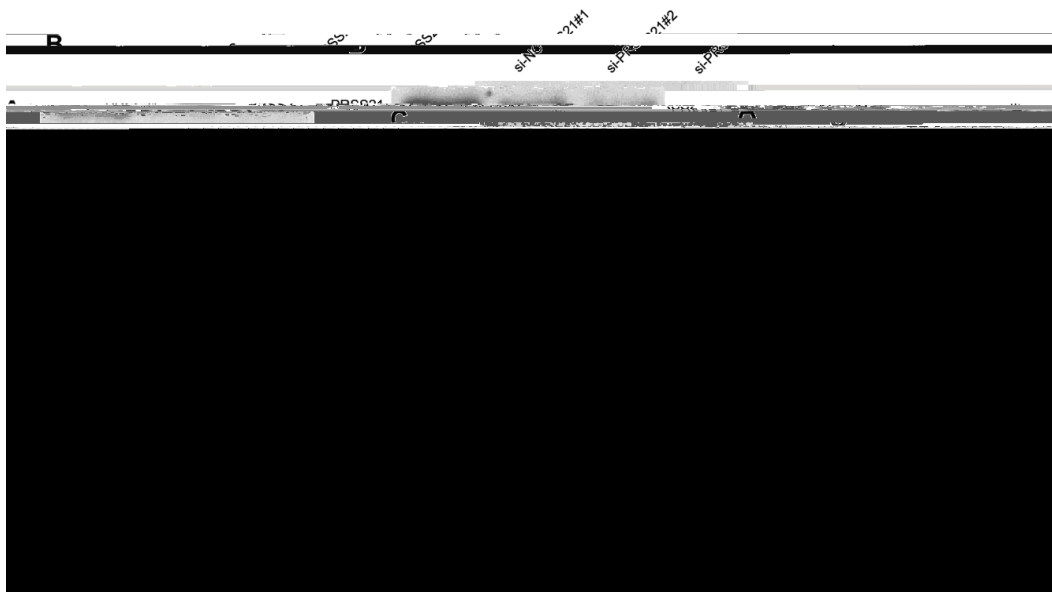


Figure 4: Knockdown of PRSS21 inhibited GC cell proliferation. A. The mRNA level of PRSS21 in GC cells after knockdown was determined by qPCR assay. B. The protein level of PRSS21 in GC cells after knockdown was determined by western blot assay. C. GC cells growth was assessed by measuring the OD values using the CCK-8 assay. ** $p < 0.01$ versus si-NC group.

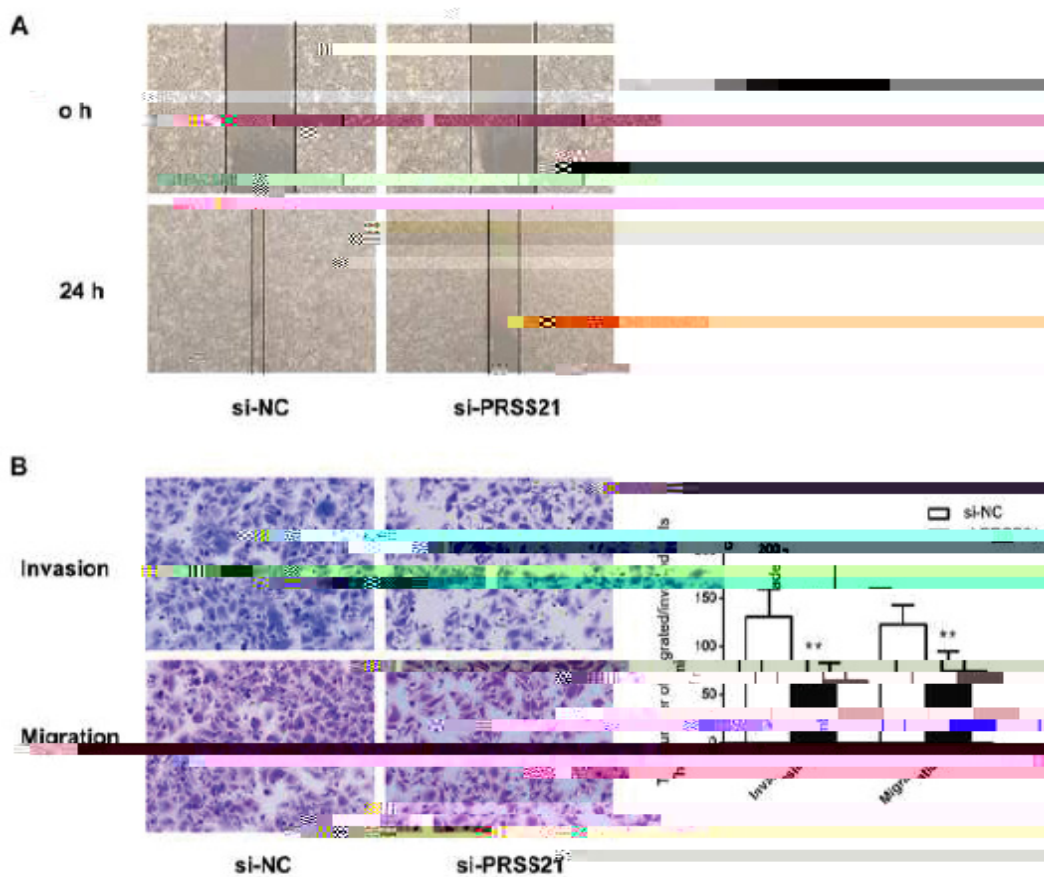


Figure 5: Knockdown of PRSS21 inhibited the mobility of GC cells. A. The mobility of GC cells was assessed by wound-healing assay. B. The abilities of migration and invasion in GC cells were measured by transwell assay. ** $p < 0.01$ versus si-NC group.

PRSS21

-PRSS21 ($p < 0.0$).

PRSS21-

Dis

23. Tamir A, Gangadharan A, Balwani S, Tanaka T, Patel U, Hassan A, et al.
The serine protease prostaticin (PRSS8) is a potential biomarker for early detection of ovarian cancer.
J Ovarian Res, 2016. **9**: 20.
24. Tang T, Kmet M, Corral L, Vartanian S, Tobler A and Papkoff J
Testisin, a glycosyl-phosphatidylinositol-linked serine protease, promotes malignant transformation *detels* ~~in~~ ~~11.2~~ ~~Metel~~ ~~J~~ ~~the~~ ~~BMJ~~ ~~U~~ ~~Ovar~~ ~~Res~~, 2006
-