



- CcRCC2&3 subtypes (low PDL1 and Plk1 expression) are eligible for TKI,
- CcRCC4 subtype (high PDL1 and Plk1 expression) are eligible for immunotherapy,
- CcRCC1 subtype (low PDL1 expression but strong Plk1 expression) are eligible for treatment with Plk1 inhibitors.

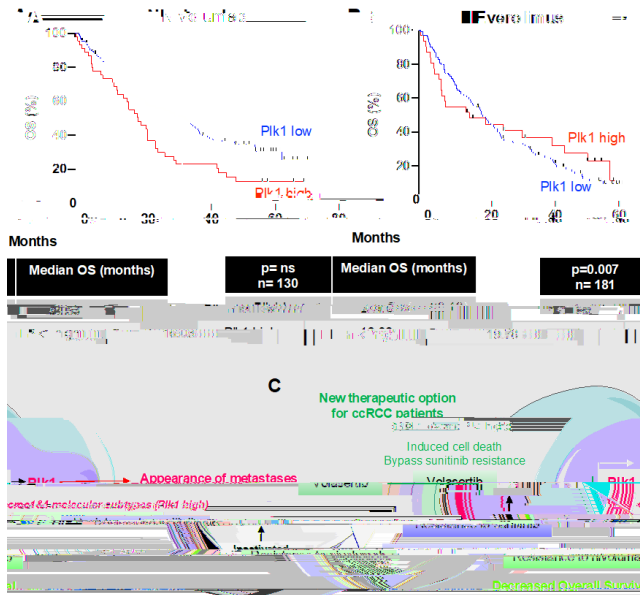


Figure 1: A and B, The levels of Plk1 mRNA