



## Management of the acute serious strokes in sub-Saharan Africa: Case of Togo

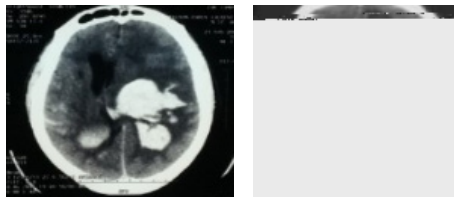
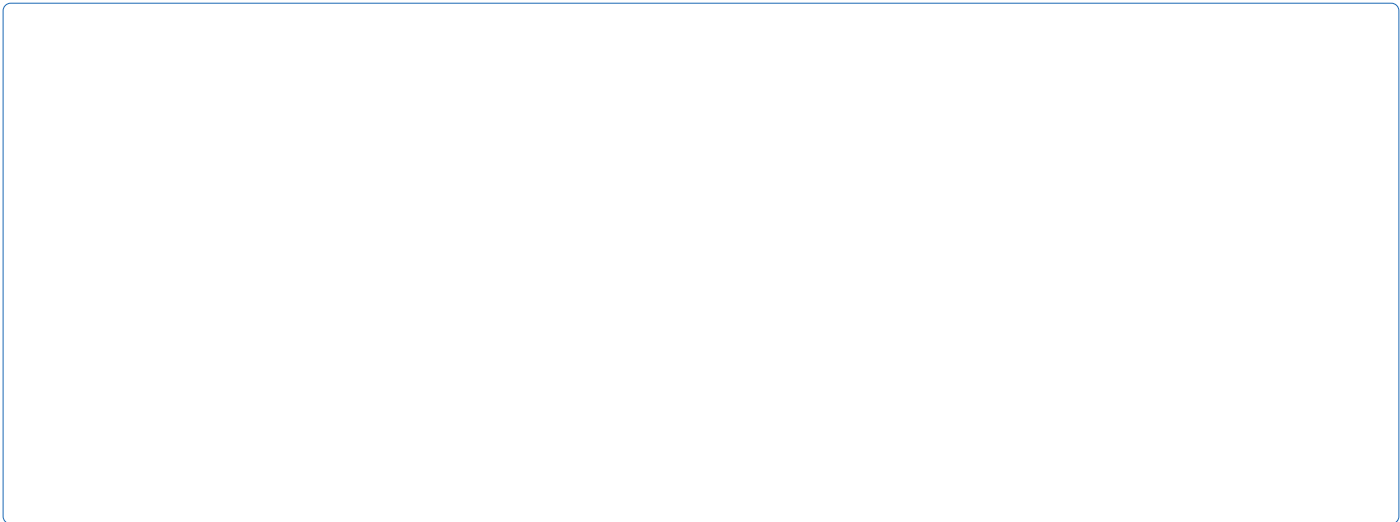


Figure 1: A-Extended hematomas complicated by ventricular flood, axial involvement and hydrocephalus; B- CT-scan showing a left Carotid artery infarct du to a embollism origin

Josué E. DIATEWA is a neurologist, assistant at the Faculty of Health Sciences of Marien Nguabi University of Congo. Since the end of his