

Study of Internal Waves in the Persian Gulf

Seyed Majid Mosaddad*

Abstract

Particularly, northern part of the PG shows more baroclinicity and turbulence because of the river inflow from the Persian Gulf (PG) from winter to summer due to the internal wave's activity and stability intensified through water column.

Keywords: Persian Gulf (PG), Thermocline, Internal Waves, Turbulence.

Introduction

Internal waves play a major role in the formation of seawater stratification and are responsible for the main processes of ocean dynamics, such as energy transfer and mixing [1]. The surface layer is influenced by local wind forcing. The thermocline tries to re-stabilize itself after the cessation of dry season and oscillates for the rest of the year. A main source of turbulence energy is the internal wave field. Some of internal wave energy derives from the transmission of wind energy through the surface mixed layer [2]. The measurement stations in the PG are presented in Figure 1.

An important mechanism for exciting fields of internal gravity waves (IGW) in natural (ocean, the Earth atmosphere) and artificial stratified media is their generation by sources of perturbation of various physical nature, i.e., of natural (moving typhoon, wind waves, flow past the ocean bottom relief imperfections, variations in the density and flow fields, leeward mountains) and anthropogenic (marine technological structures, collapse of the turbulent mixing region, underwater explosions character [3]).

Thermocline Formation in the PG

Temperature, density, and salinity are three useful physical properties of seawater to studying. Naturally, the temperature of seawater is fixed at the surface by heat exchange with the atmosphere. Temperature and density vertical variations in some stations in three measurement sections are as in the following profiles in the PG in winter and summer.

The atmospheric disturbance is set by an idealized pulse of cyclonic wind stress with a Rankine vortex structure. Strength, radius and duration of the forcing are varied. The effect upon wave generation of stratification with variable mixed-layer depth is also examined [4]. Relying on the accuracy of the curves in Figure 2, it could be stated that vertical gradient of temperature and density in the subsurface of the water column is very high in the summer but in winter, it is high only in the Strait of Hormuz because of water exchange in winter.

In fact, it could be resulted that thermocline exists only in summer. Overall, the temperature breaks in the subsurface layer through the water column because of wind stress, demonstrates the thermocline developed in the study area. In this regard, thermocline formation and its development are associated to some variations in internal waves, particularly in subsurface layer.

In fact, thermocline development and its variation in space and time represent a turbulent flow, and thus propagation of internal waves through water environment. Turbulence and internal waves propagate along the baroclinic pressure gradient in a vertical direction through the water column due to baroclinicity and tidal wind stress [5]. Based on Figure 2 comparing the curves, we could observe that thermocline does not form in winter, particularly in the Strait of Hormuz because of water exchange with the Gulf of Oman. However, it forms all over the PG through the water column, suggesting that thermocline develops from the Strait of Hormuz to the PG North from winter to summer.

Results and Discussions

*Corresponding author:

Received:

Accepted:

Published:

Citation:

Copyright:

Citation:

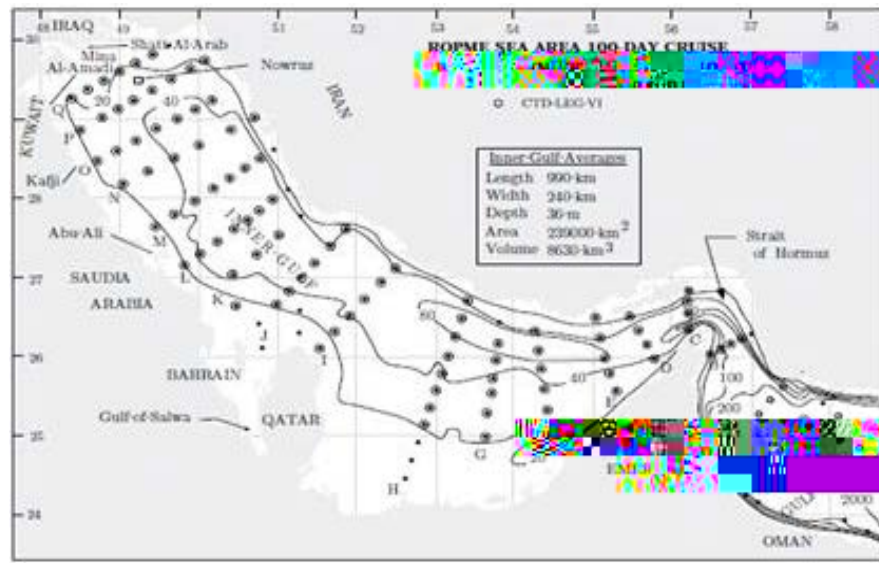


Figure 1

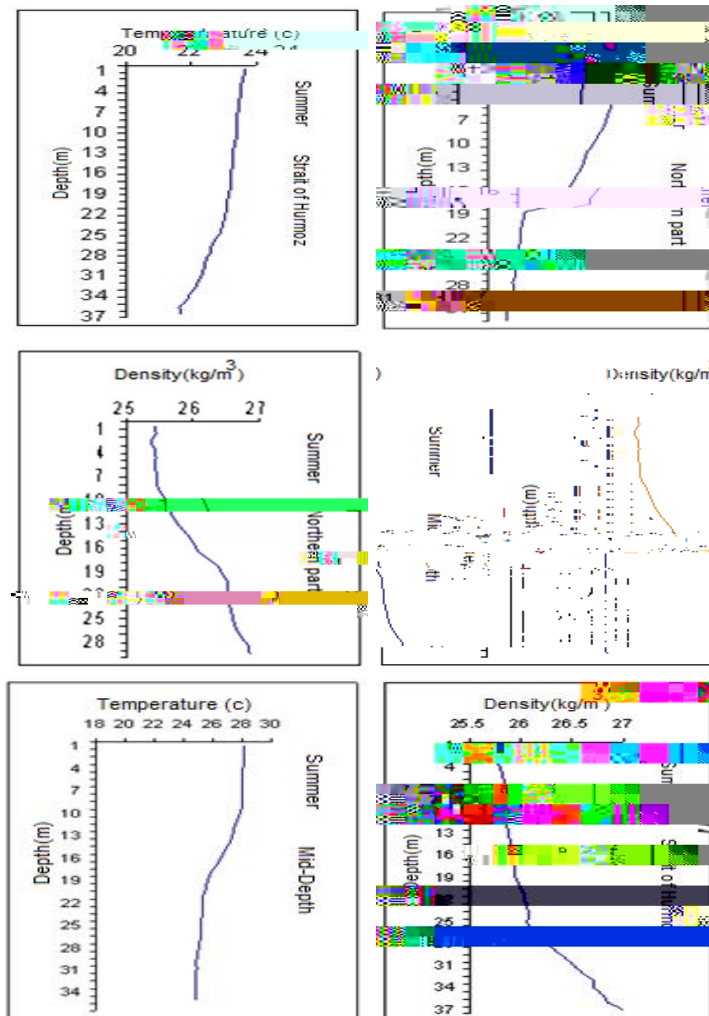


Figure 2:

Citation:

Wind stress as a forcing generates an acceleration for water body in vertical and horizontal directions with its components due to shear induced on water [8].

Thermocline forms in the open ocean and can be a seasonal phenomenon in the shallower part of the ocean or a permanent since it is seen in the deeper part of the open ocean. Thermocline is a phenomenon which happens in the Persian Gulf, and it develops from winter to summer resulted of the numerical model (POM) in the PG [9]. Formation of a shallow thermocline with upper mixing and displacements of the thermocline is associated with internal wave propagation, which plays an important role in turbulence generation.

Stratification as an important factor in influencing on local generation of internal waves in the coastal zones subjected to seasonal variability [10].

In this study, we have wanted to appoint internal waves dependence on thermocline development in the PG, and so will conclude internal waves and turbulence. As in the above profiles, there are fluctuations and variations along vertical T & D; therefore, it could be a crucial result of internal wave's existence (e)2020()0[5(et11 [9]-19.4(Thu6le)-19.thermoclin-19.s

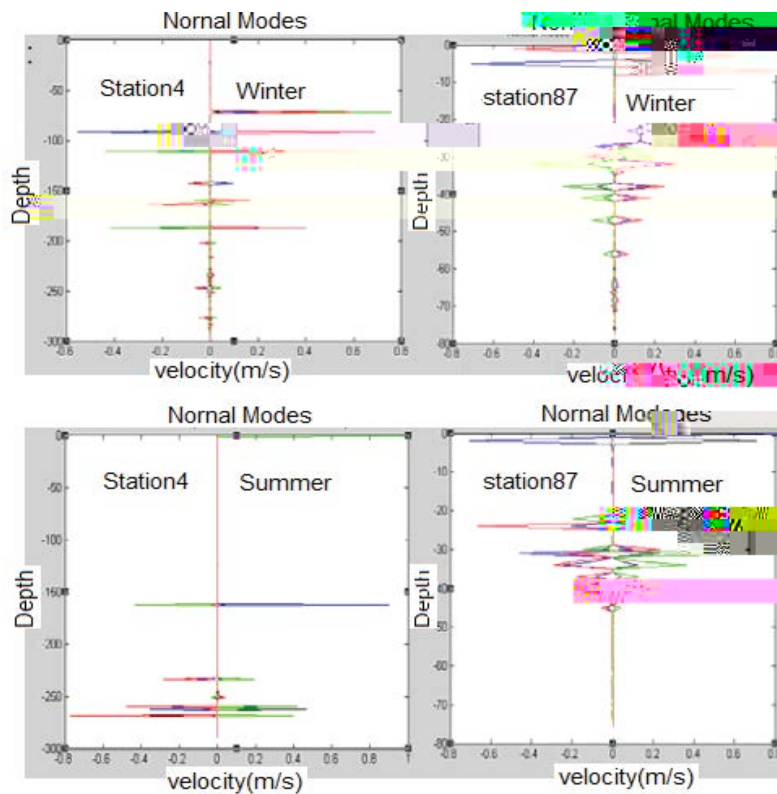


Figure 6

Conclusion

Existence of stratification and development of thermocline in the PG is a crucial phenomenon. Summer thermocline formation in the PG is a seasonal potential of turbulence, and internal wave's creation would happen in the case study zone. Thermocline formation is usually associated with internal waves as an important cause in turbulence.

Internal waves are able to provide and transmit the energy, which is essential for aquatic circulation and mixture. Moreover, in coastal areas that changes in fluid temperature in water column causes diffusion of internal waves.

It could be concluded that:

1-Baroclinic pressure and stratification, cause turbulence throughout PG water column in summer.

2- In summer, turbulent behavior happens. The most effective factors on the behavior in the PG are tide, wind, evaporation, and river inflow.

3- The existence of tides, northwestern winds, and strong internal waves in PG results in high vertical component of internal wave's velocity.

4- Turbulence and internal waves due to baroclinic pressure because of density gradients exist in the PG water in summer.

5- Vertical component of internal waves velocity has range of $[-0.8, +0.8]$ with more fluctuations in summer.

References

Bidokhti A A, Ezam M (2008) The structure of the Persian Gulf outflow subjected

Citation:
