

Bilateral Popliteal Arterial Emboli

Anthony C Chyou*, Luke K Kim and Dmitry N Feldman

Cardiologist (Heart Specialist) in New York, New York Presbyterian Hospital, USA

*Corresponding author: Anthony C. Chyou, Cardiologist (Heart Specialist) in New York, New York Presbyterian Hospital, 525 E 68TH ST, USA, Tel: 212-746-5454; E-mail: acc9011@nyp.org

Received date: May 22, 2017; Accepted date: June 16, 2017; Published date: June 21, 2017

Copyright: © 2017 Chyou AC, et al. This is an open-access article distributed under the terms of the Creative Commons Attribution License, which permits unrestricted use, distribution, and reproduction in any medium, provided the original author and source are credited.

Case Report

A 71 year-old woman with hypertension, rheumatic heart disease complicated by severe mitral stenosis, atrial fibrillation on chronic warfarin therapy who presented with bilateral calf pain. Two weeks prior to her presentation, to QM -m rioGi al 1 Q mo e m



Figure 2 Angiogram: Thrombotic occlusions of popliteal, tibio-peroneal trunk, and anterior tibial arteries bilaterally prior to intervention.

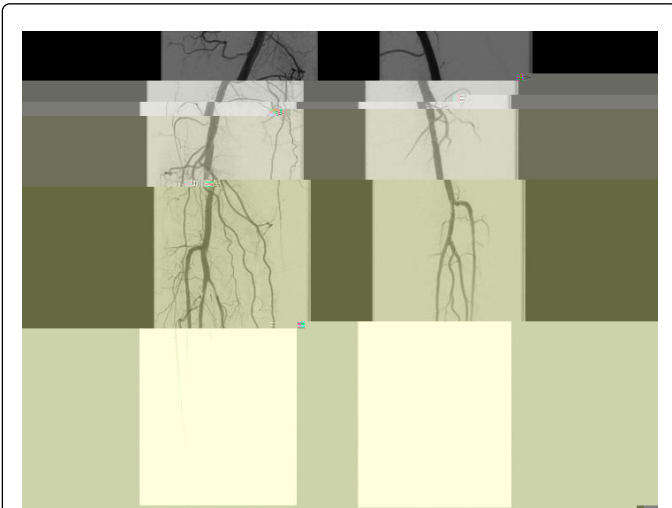


Figure 3 Angiogram: Successful thrombus extraction with rheolytic thrombectomy and percutaneous transluminal angioplasty of bilateral popliteal, tibio-peroneal trunk, and anterior tibial arteries.

Reference

1. Rapp JH, Gasper W (2014) "Arteries" Current Diagnosis & Treatment: Surgery, 14th Edition. New York, NY: McGraw-Hill.
2. Oneglia C, Rusconi C (2001) "Left atrial appendage thrombus as a source of peripheral embolism" Echocardiography: 5: 389-390
3. Raut CP, Cambria RP, LaMuraglia GM, Brewster DC, Moncure AC (2004) "Surgical management of popliteal artery embolism at the turn of the millennium" Annals of Vascular Surgery 1: 79-85
4. Abbott WM, McCaughy J (2004) "The use of the Greenfield filter in the management of acute deep vein thrombosis" J Vasc Med Biol 16: 10-14