



**Bournemouth
University**



**2017 RCTI and CIH
Innovation Forum:
Embracing innovation in China**

Research Centre for Technological
Innovation, Tsinghua University and
China Innovation Hub,
Bournemouth University

19 May 2017

www.bournemouth.ac.uk/global-fof

CONTENT

Key

These icons show the type of event

Activity type

Audience type



General audience



Photography and filming

Photographs and video footage will be taken at the GFOL for use in promotional material. If you do not want to be featured, please let us know at the registration desk.



We are delighted to welcome you to our annual China Innovation Forum which is jointly organized by the Research Centre for Technological Innovation, Tsinghua University and China Innovation Hub, Bournemouth University.

C I F
C K
21 C I E
L C G F 2017, B C
C I F

Dr Sonal Minocha, Pro Vice-Chancellor (Global Engagement)

Professor John Fletcher, Pro Vice-Chancellor (Research and Innovation)

Research Centre for Technological Innovation, Tsinghua University

C I M 2000. D M E J F C I C I F C I C I G C I

... the Research Centre for Technological Innovation (CTI), Tsinghua University, Beijing. The CTI was established in 2000 and is a leading research and innovation center in China. It focuses on research and development in the field of technology innovation, particularly in the areas of artificial intelligence, robotics, and new materials. The center has a strong track record of producing high-quality research and has attracted significant funding from both the government and industry. It is a key player in the development of high-tech industries in China and is a major research hub for the country.

China Innovation Hub, Bournemouth University

C I H (CIH), G H CIH B C B 4.0. C CIH 2020. B & & & C :C 和 () I ; C H

... the China Innovation Hub (CIH) at Bournemouth University. The CIH was established in 2020 and is a leading research and innovation center in China. It focuses on research and development in the field of technology innovation, particularly in the areas of artificial intelligence, robotics, and new materials. The center has a strong track record of producing high-quality research and has attracted significant funding from both the government and industry. It is a key player in the development of high-tech industries in China and is a major research hub for the country.

Tsinghua x-lab visit

1. 清华大学 x-lab 访问
2. 清华大学 x-lab 访问
3. 清华大学 x-lab 访问
4. 清华大学 x-lab 访问
5. 清华大学 x-lab 访问
6. 清华大学 x-lab 访问
7. 清华大学 x-lab 访问
8. 清华大学 x-lab 访问
9. 清华大学 x-lab 访问
10. 清华大学 x-lab 访问

08:30 Coffee and registration
BU posters and exhibition

09:00 Welcome

10:00 **Keynote: BU's Hubs of Practice: Driving global thinking through innovation**

Dr. David L. Foray, MIT, USA - Co-Chair
 (G. E. ...), BU
 Dr. L. L., ...
 I. H., B

10:30 **Refreshments**
Group Photo

10:45 **Keynote: Global innovation trends and UK-China collaboration**

C. J., D
 I

11:15 **Keynote: China's embracing innovation leads to the future**

L-H, ...
 B

11:30 **Plenary session:**
The rise of China: Building Chinese management theories and creating innovation-based competitiveness for Chinese firms

Chair: Dr. L. L.; J. C

12:30 **Lunch**

BU CIH Innovation Research Showcase

13:30 **Entrepreneurship and resilience: Disaster management in cyber space**

L. M., A, D, D
 ; C-I, C, I
 H, B

13:45

Who are the future entrepreneurs?

J L , D , C E
G E
D L , L , A D (G E)
B

14:00

Disruption in the digital age: Rethinking big data

D , F M
C , B
D , F M C
B

14:15

Transforming health in the digital age:
Virtual reality in orthopaedics treatment

D , D D
I , F H
, B

Technology and self-management health problems

D C , C , F H
B
H , B

Mobile health management and key influencing factors

D L ,
D L , L , B

15:00

Transforming manufacturing in China:
Industry 4.0 and robotics

H , B

15:15

Keynote: Inspirational women in sports

MBE, G

15:35 **Closing remarks**
 D L, L, A, D (G, E),
 F, M, B,
 C, J, D, C,
 I,

15:45 **Refreshments and networking**

16:00 **Tsinghua x-lab visit**

Keynote: China's embracing innovation leads to the future

Chair:

Professor Richard Li-Hua, Visiting Professor, Bournemouth University

 11:15



B, C
 C
 C
 C
 H, C
 ?

Dr Sonal Minocha
Pro Vice-Chancellor (Global
Engagement), Bournemouth University

Dear Sir,
I am pleased to hear that you are interested in the
position of Pro Vice-Chancellor (Global Engagement) at
Bournemouth University. I am currently the Pro Vice-Chancellor
(Global Engagement) at Bournemouth University, UK.
I have been in this position since 2018. I have a
PhD in International Business and a Master's in
Human Resources Management. I have worked in
higher education for over 20 years. I have been
involved in a number of international projects and
initiatives. I have a strong track record in
developing and leading international teams. I have
a passion for internationalisation and for
developing global partnerships. I would be
pleased to discuss the position with you further.
I am available for an interview on 11th June 2024.
I am available for an interview on 11th June 2024.
I am available for an interview on 11th June 2024.

Dr Lucy Lu

Associate Dean, Global Engagement,
Faculty of Management, Bournemouth
University

Key expertise: I

(EE)
L 15,
MBA, D C
A D (G E)
F M B
B C I L H
B C
C C L G
M (CAM)
2008.L
J K I E
C A H
I J I
, B I C

Professor Lee Miles

Co-Investigator, China Innovation
Hub, Professor of Crisis & Disaster
Management, Disaster Management
Centre, Faculty of Management,
Bournemouth University

M.
M.
M.

Dr Xiaosong Yang

Co-Investigator
(China Innovation Hub)

Associate Professor in Computer Animation, Faculty of Management, Bournemouth University

Key expertise: C

... ..
... ..
... ..

D A
... .. C C
A B H
... .. 60.

... ..
... .. A I C -I,

E C B A
D B I &
... .. (K), H E I
F AH B
H C C
H

... ..
... .. New
Scientist, Wiedza I Zycie MIT Technic
Review H

... .. C
A, K F

Dr Zhidong Xiao

Senior Lecturer in Computer Animation,
Co-Investigator (China Innovation Hub),
Bournemouth University

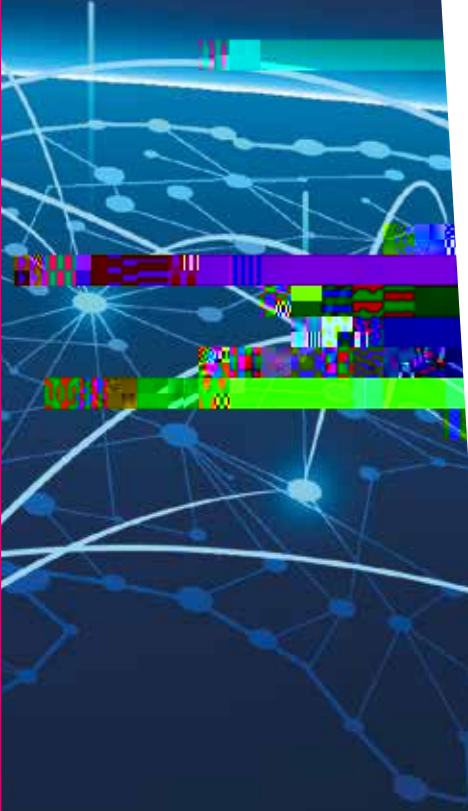
Key expertise: M

... D
... L
... BA(H) C
& A ... G ... E
... C ... C
... F ... M &
... B
...
... ME ... K ... E
... K1(...)23(23(...)36.1()11(...) 1

Professor Hongnian Yu

Faculty of Science & Technology,
Bournemouth University

H ... C
... B ... H
... 16 D ... 16
M ... 11 ... 200
... H
... H
... F.C.
... IEE C ... H ... G ... M
... E ... I ... A
2009, I ... E
I ... ,G ... ,2010;
C A ... I ... ;
43 I ... E
... ,G ... ,2015.H
... H
... E C ... C



Dr Carol Clark

Associate Professor, Head of Department of Human Science & Public Health, Faculty of Health & Social Sciences, Bournemouth University

Carol Clark is a Senior Lecturer in Health Communication, and has been involved in a number of research projects in health communication, including the development of a national campaign to reduce the use of mobile phones while driving. She has also been involved in a number of research projects in health communication, including the development of a national campaign to reduce the use of mobile phones while driving. She has also been involved in a number of research projects in health communication, including the development of a national campaign to reduce the use of mobile phones while driving.

She has published a number of papers in the area of health communication, and has been involved in a number of research projects in health communication, including the development of a national campaign to reduce the use of mobile phones while driving. She has also been involved in a number of research projects in health communication, including the development of a national campaign to reduce the use of mobile phones while driving.

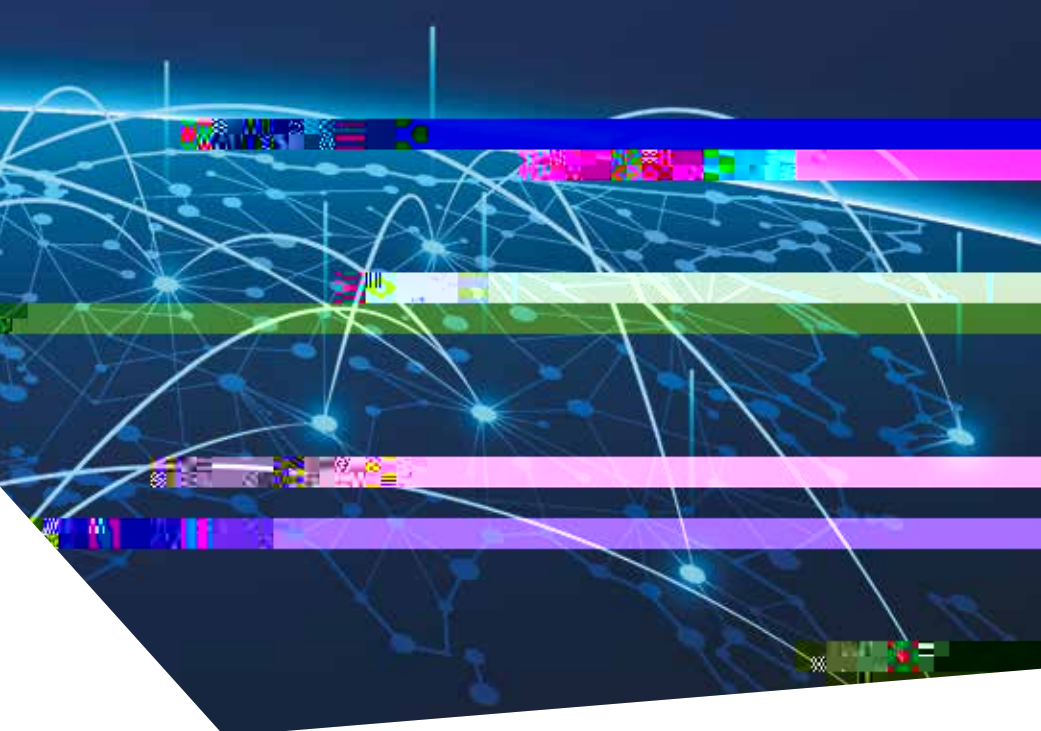
She has published a number of papers in the area of health communication, and has been involved in a number of research projects in health communication, including the development of a national campaign to reduce the use of mobile phones while driving. She has also been involved in a number of research projects in health communication, including the development of a national campaign to reduce the use of mobile phones while driving.

She has published a number of papers in the area of health communication, and has been involved in a number of research projects in health communication, including the development of a national campaign to reduce the use of mobile phones while driving. She has also been involved in a number of research projects in health communication, including the development of a national campaign to reduce the use of mobile phones while driving.

Prof Zhulan Fang
School of Economics,
Renmin University

Prof Zhulan Fang is a Senior Lecturer in Health Communication, and has been involved in a number of research projects in health communication, including the development of a national campaign to reduce the use of mobile phones while driving. She has also been involved in a number of research projects in health communication, including the development of a national campaign to reduce the use of mobile phones while driving.

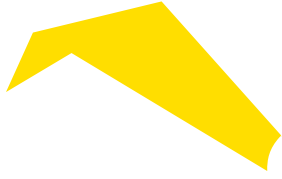
She has published a number of papers in the area of health communication, and has been involved in a number of research projects in health communication, including the development of a national campaign to reduce the use of mobile phones while driving. She has also been involved in a number of research projects in health communication, including the development of a national campaign to reduce the use of mobile phones while driving.



Tom Wainwright
 Associate Professor in Orthopaedics
 and Deputy Head of Orthopaedic
 Research Institute,

Susannah Rodgers

MBE
 30
 L 2012 G
 G
 2016 G
 -E D B
 BAC A A
 G I
 L
 2012, A &
 & I
 B C



Tsinghua University
30 Shuangqing Rd, Haidian
Qu, Beijing Shi, China, 100084

ENQUIRIES

Jing Wang

Research Centre for Technological Innovation

www.bournemouth.ac.uk/global-foi

